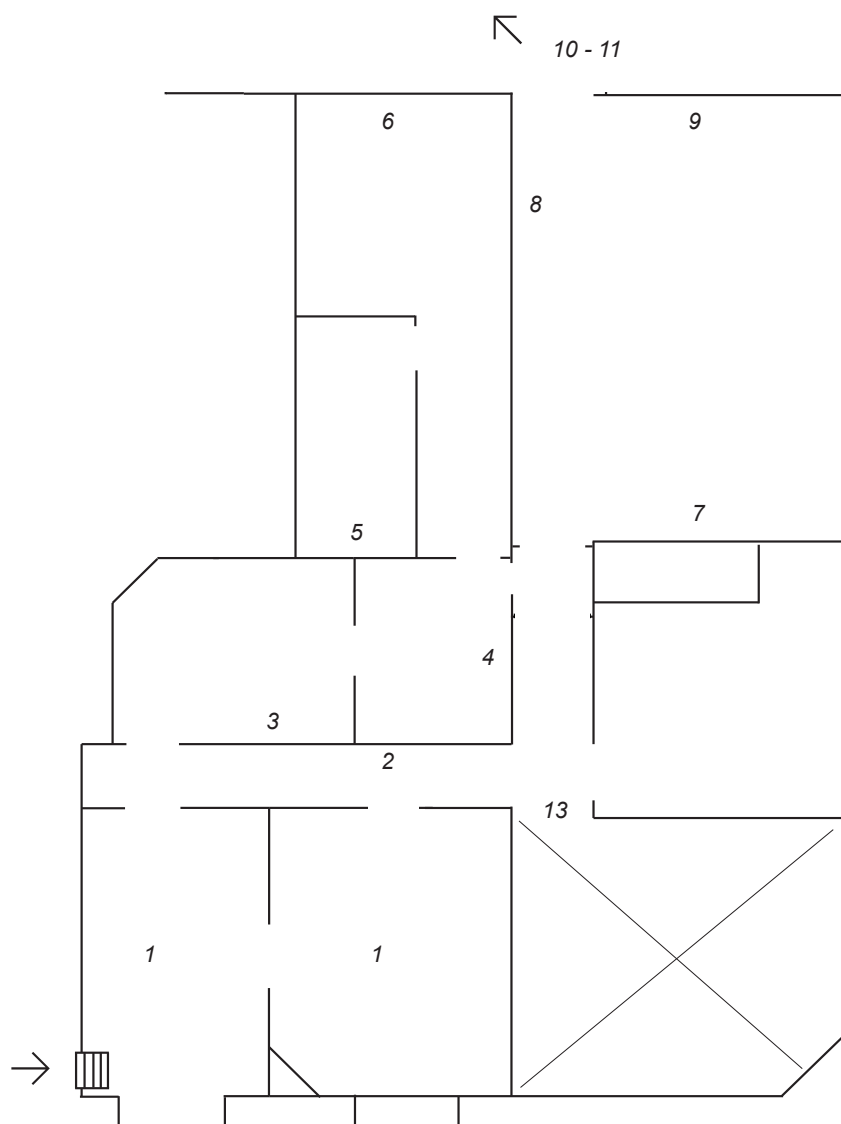


GREYLIGHT PROJECTS

Documents de travail

An exhibition by Thomas Bernardet

Map of the exhibition



1. Liste Rouge, 2019

Adhesive on paper

2. Document de travail (Ddt)- Du Rose sur le Mur Aussi, 2018

Photographic image, silk paper, frame, vinyl, magnet, metal

3. Ddt - Un Sol Andalou, 2014

Photographic image, silk paper, plaster board

4. Ddt - Un Problème de Cadre, 2014

Photographic image, silk paper, plexiglass, wood

5. Ddt - Forme et Contreforme, 2016-2019

Photographic image, silk paper, piano string, magnet and frame

6. Explorer EXPLORER, 2019

Video, 50 mn

7. Ddt - Un Pommier des Alpes, 2019

Photographic image, vinyl, wood, cardboard paper, plasterboard

8. Ddt - Le Séchoir Espagnol, 2016-2019

Photographic image, silk paper, awagami paper, wood, plasterboard

9. Ddt - Scanner l'hirondelle / support Sur place, 2011-2019

Video, 38 mn

10. Ddt - Chantiers / La Perruque, 2015-2019

Video, 48 mn

11. Ddt - Rue Francis Picabia, Paris, France, 2016-2019

Photographic image, silk paper, wood, plasterboard, magnet, piano string

GREYLIGHT PROJECTS

Documents de travail

An exhibition by Thomas Bernardet

It's the journey of an artist at work. He gives to his working days a sensitive note because he is involved in someone else's artistic project. Thomas Bernardet is busy with his own art during work hours, documenting materials which manage to catch his attention. One day he works on his personal work when setting up a renowned artist exhibition in an acknowledged museum, the other he is arranging a collector's library.

Daily documentation. Progression. Bernardet constantly renews the invention of shapes and color, moulding time and witnessing its non-permanence. He arranges in layers the possibilities of common and sense. He recognizes and arranges the decay of found materials. The layers detach, take off. When gathered they form delicate delight. It is about gradually accumulating samples hit upon the way, using them extensively and making personal arrangements: prints, videos, paper sheets, metal pieces, magnets, wooden plates, plaster plates, vinyl films, frames.

Documents de travail (Working Documents) features new productions and existing works and resonates with poetry, somehow in a corroded way, to the characterful basement of Greylight Projects Brussels. The starting point of the exhibition is located at the center of a constellation: Explorer Explorer (2019), a dronesque tribute to Explorer -the Rita McBride show at Wiels contemporary art center which received Thomas Bernardet's contribution as a technician worker. The video dialogues with the different qualities of the Thomas Bernardet's pieces waiting for the visitor in each and every room, forming the multiple paths of a constellation that reveals some qualities of his trajectories and occurrences.

David Bernadas